



Boom/chain installation

GKC LED Fin high bay light

Suitable for various engineering lighting of factories/
workshops/warehouses

Focus on lighting engineering



Energy-saving
soft light



Better heat
dissipation



Not easy
to damage



Stable
performance

High-power lighting range

The height and lifespan are brighter than ordinary industrial and mining amps, and the irradiated area is wider, the light distribution is uniform, and the light is abundant and bright.



IP65

LM80

Show details

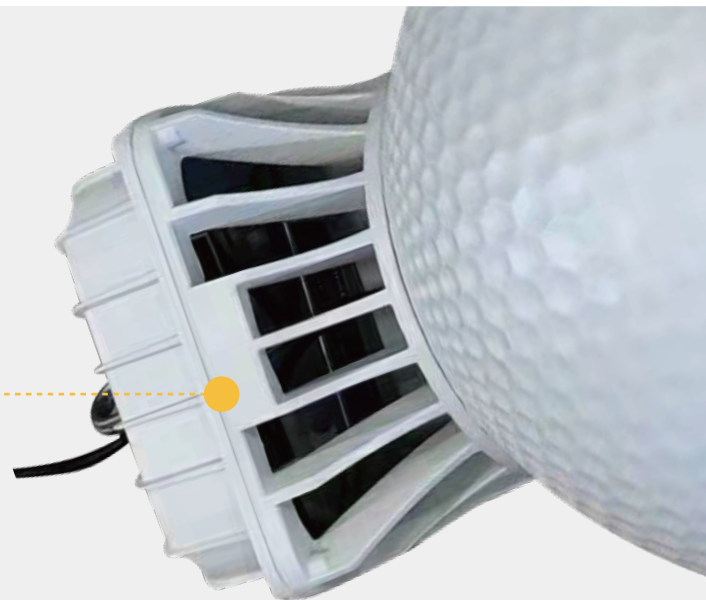


Aluminum reflective mask

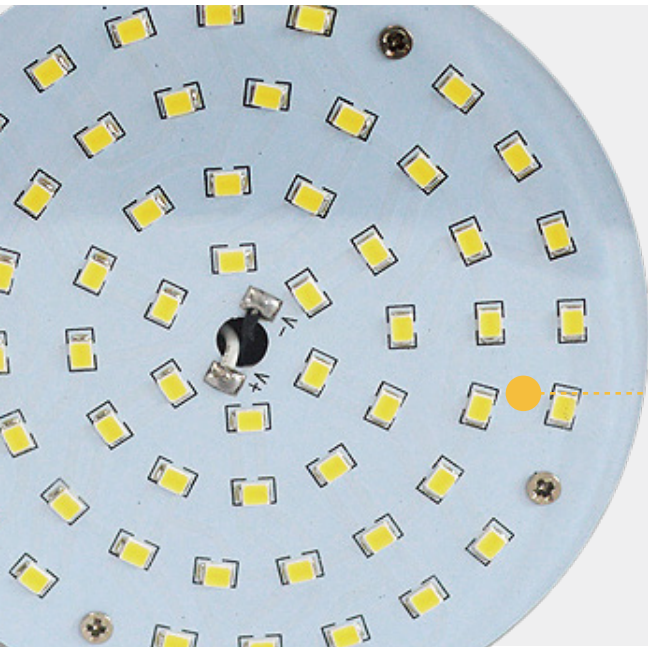
The aluminum reflector contains multiple refraction grooves to make the emitted light uniform and the irradiation range is wider.

Aluminum radiator

Adopt fin aluminum radiator strong convection heat dissipation design, increase heat dissipation performance, ensure lamp bead working temperature, stable use.



Show details



Bright LED chip

Using high-power quality LED chips, good light efficiency, high color rendering index, low heat, bright and uniform light.

High color rendering index

The color reproduction rate is high, close to the color rendering index of sunlight, which can present true and natural colors.





High: 4-6m
Scope: 40m²

80W



High: 7-8m
Scope: 50m²

100W



High: 9-10m
Scope: 60m²

150W

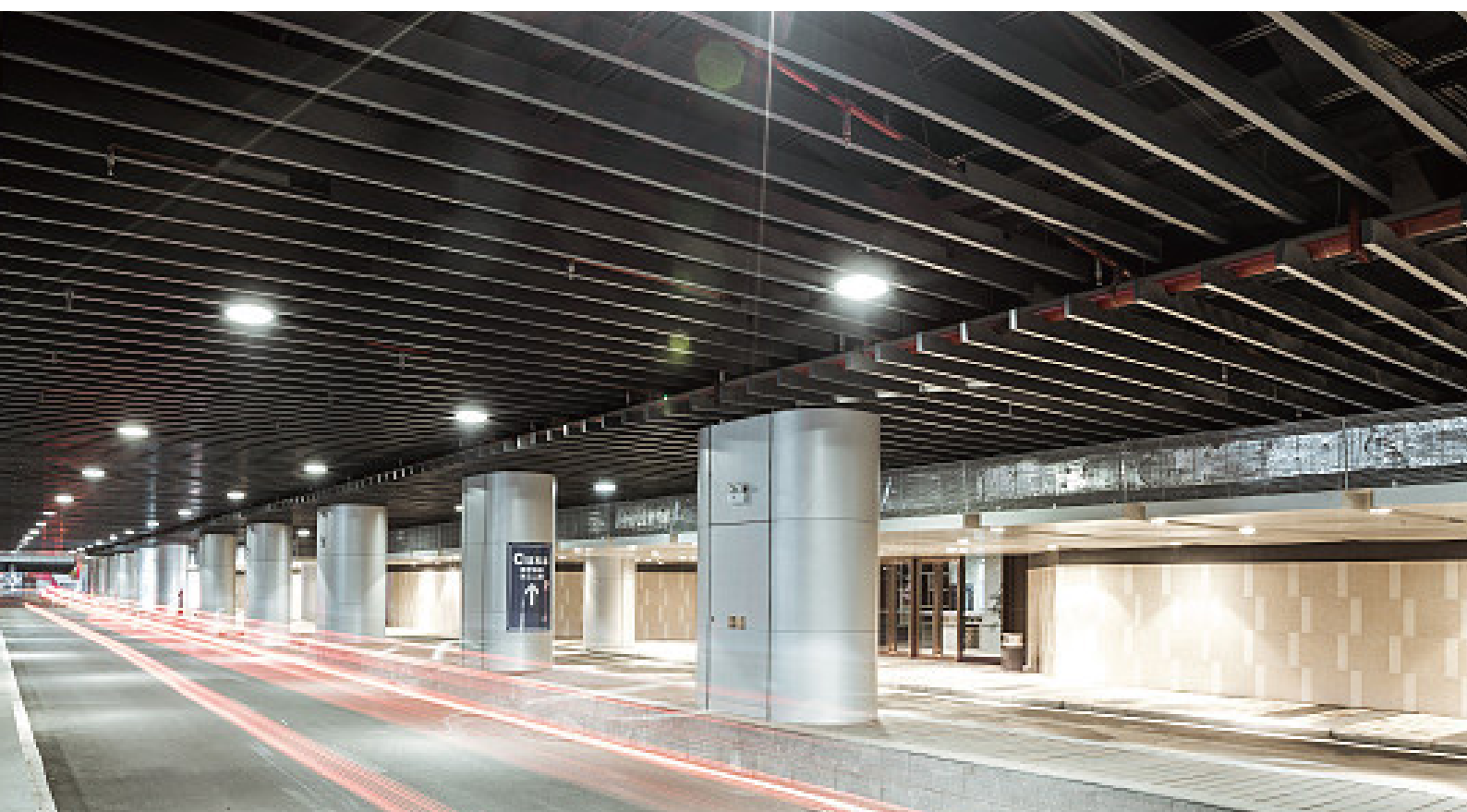


High: 11-12m
Scope: 70m²

200W



Scenario shows



Product parameter

Model	Power	LED	Luminous flux	Size	Qty(1 box)	KG
GKC-80W	80W	100PCS, SMD3030	>10400LM	400*365mm	8pcs	20KG
GKC-100W	100W	110PCS, SMD3030	>13000LM	400*365mm	8pcs	20KG
GKC-150W	150W	165PCS, SMD3030	>19500LM	400*365mm	8pcs	20KG
GKC-200W	200W	220PCS, SMD3030	>26000LM	450*425mm	8pcs	36KG